

pads

loads

pads



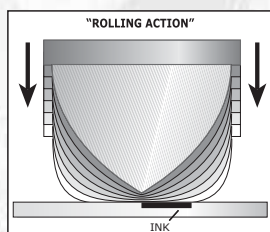
Pads are, without a doubt, the most important and delicate elements of the pad printing process.

They take the ink from the plate and deposit it on the object to be printed. During this operation they must guarantee that the characteristics and the quality of the graphics to be transferred are kept.

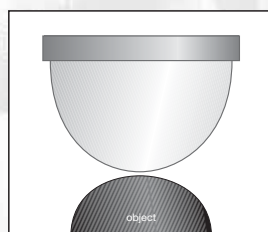
In order to work perfectly, the pads must meet certain chemical and physical requirements which guarantee their operation. Choosing the correct pad requires a deep knowledge of the printing process, as this choice must take the following main aspects into consideration:

- dimensions and type of graphics to be printed;
- the shape of the surface of the object to be printed;
- the type of ink to be used;
- the type of etch on the plate;
- the speed of the printing cycle;
- the amount of pressure on the pad;
- the pad printing machine available.

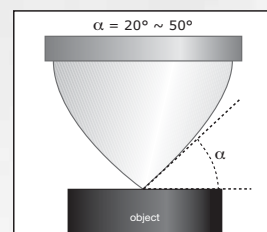
TOSH offers its own technical experience and proposes a complete range of pads, to meet any printing requirement. A specific pad catalogue illustrates TOSH's varied production and supplies detailed information on the characteristics taken into consideration when choosing a pad. All types of pads on the catalogue are in stock and ready to deliver. TOSH also produces pads of special shapes or materials, to meet specific client needs.



The pad has a typical pointed shape on a round base. The pointed shape is necessary in order to correctly take up the ink from the engraving in the plate while avoiding air bubbles which would compromise printing quality.



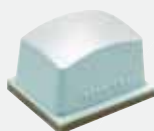
Pads with sharper edges are generally used for flat surfaces, while pads with rounded profiles are used for convex surfaces.



The ideal contact angle between the object surface and the pad surface lies between 20° and 50°. A suitably high pad compresses itself easier than a lower one, thus limiting deformations more effectively. Pad dimensions should therefore be about 30% larger than the graphics to be printed.



Each single TOSH pad is produced in 4 types of rubber, with different quality, elasticity, hardness and resistance.



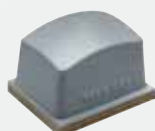
White rubber

These pads are softer but offer good printing quality and excellent chemical resistance; particularly suitable for machines with low printing strength. White rubber is produced in 2 standard levels of hardness:
hardness A (0° Shore A)
hardness B (2° Shore A)



Yellow rubber

Higher chemical resistance, in particular to catalysts. Yellow rubber is produced in two standard levels of hardness:
hardness A (1° Shore A)
hardness B (5° Shore A)



Gray rubber

Superior coefficient of elasticity, extension and resistance to tearing; suitable for printing on objects in any case in which high rubber extension is required. Gray rubber is produced in four standard levels of hardness:
hardness S 100 (1° Shore A)
hardness S 80 (3° Shore A)
hardness A (6° Shore A)
hardness B (10° Shore A)



Red rubber

This rubber guarantees the best relationship between printing quality and mechanical resistance. It is recommended for printing graphics with particularly thin lines and for extremely precise printing. It is produced in four standard levels of hardness:
hardness S 100 (1° Shore A)
hardness S 80 (3° Shore A)
hardness A (6° Shore A)
hardness B (12° Shore A)

The availability of a wide range of pads in different shapes, types of rubber and hardness levels, such as the ones in TOSH's catalogue, helps the pad printer select the most suitable product.

All TOSH pads, whatever type of rubber they are made of, are available in hundreds of standard shapes, arranged in seven main categories as illustrated below:



01 - revolution pads on rounded base



02 - revolution pads on square or rectangular base



03 - bar pads



04 - asymmetrical bar pads



05 - saddle pads



06 - special pads



07 - HP series pads

To reduce production time and to help our clients select their products autonomously, TOSH has provided the online catalogue with a quick and simple interactive search engine. Use it to quickly find a selection of pads with the characteristics you are looking for.



The ONLINE CATALOGUE area at www.tosh.it displays our entire range of pads, coded and divided according to shape.