

standard colours

TOSH routinely produces a range of standard colours always available from stock. TOSH's colour chart shows different colours in relation to the ink to use:

- 16 gloss colours for one-component ink;
- 22 gloss colours for two-component ink;
- 11 MX colours;
- 3 process colours;
- 5 fluorescent colours;
- 5 metallic colours;
- 5 metalized colours.



special colours

TOSH and its distributors throughout the world, can provide a fast service on non-standard colours either from a recognized colour chart from specific sample. The service provides colour-matched inks, using the MX shades.

For customers wishing to prepare special colours themselves, TOSH offers "SYSTEM COLOR TOSH". It is a specific system realized to satisfy pad printer needs. It allows to easily obtain any special shade, using the 11 MX colours available for STE, STF, STL, STB, STP, STM, STV, STX and STU inks series.

S Y S T E M
COLORTOSH



standard colour range

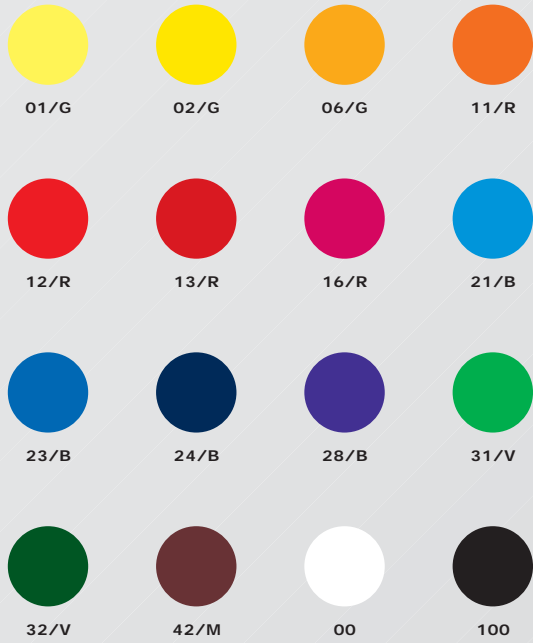
	STL	STO	STE	STF	STV	STX	STU	STP	STG	STC	STB	STD	STM
gloss colours for one-component inks	✓						✓	✓		✓			
gloss colours for two-component inks			✓	✓	✓	✓			✓		✓	✓	✓
flat colours		✓											
process colours	✓	✓	✓	✓	✓	✓	✓	✓	✓	✓	✓	✓	✓
fluorescent colours			✓			✓		✓					
metallic colours	✓	✓	✓	✓	✓	✓	✓	✓	✓	✓	✓	✓	✓
metalized colours			✓			✓	✓				✓		✓
MX colours	✓		✓	✓	✓	✓	✓	✓			✓		✓

Some of our standard colours are also available in the corresponding high-density formulations; for more information contact TOSH technical service.

WARNING

All colours can be mixed together. Slight colour differences between the colours on chart and applied products are inevitable, as well as differences amongst produced lots. Therefore, we recommend carrying out print trials for the final choice of colour.

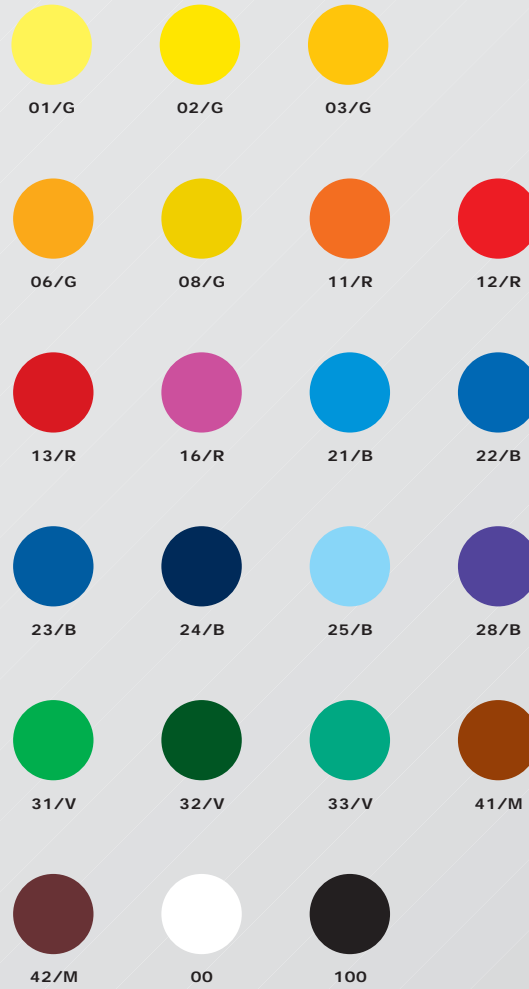
tinte lucide per monocomponenti
gloss colours for one-component inks



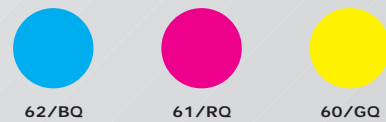
tinte MX - MX colours



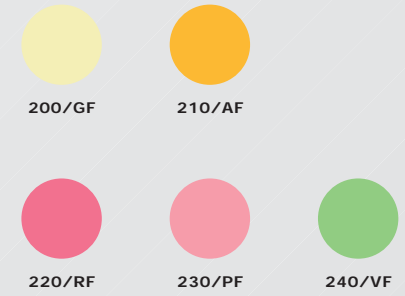
tinte lucide per bicomponenti
gloss colours for two-component inks



tinte di quadricromia (scala Europa)
process colours (Euroscale)



tinte fluorescenti
fluorescent colours



tinte metalliche
metallic colours



tinte metallizzate
metalized colours

